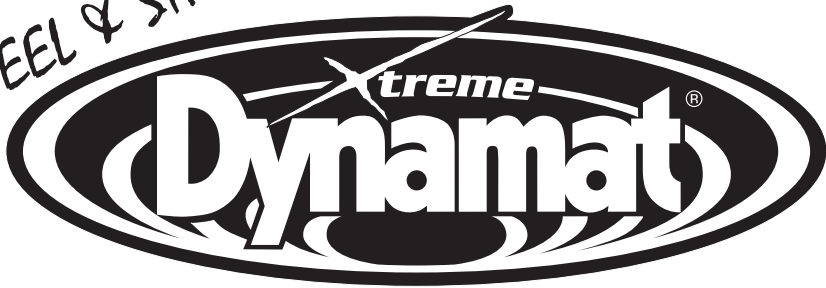
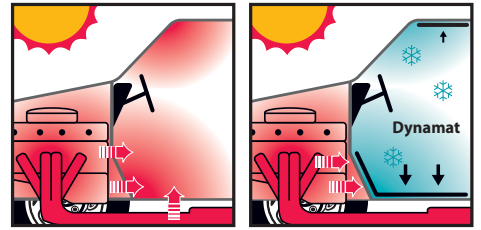


PEEL & STICK!



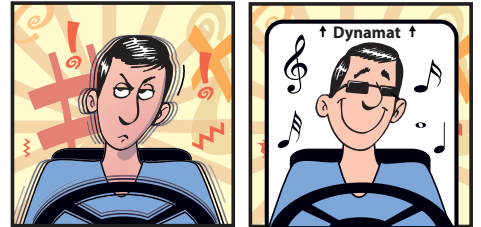
HOT CARS BECOME COOL!



CREATE A SOLID, LUXURY CAR FEEL

Dynamat Xtreme is the highest efficiency sound deadening material available and the most effective product for stopping noise and vibration. Xtreme should be used on any and all interior sheet metal or fiberglass of your vehicle. The aluminum constraining layer is very moldable and conforms easily to all interior surfaces. The extra sticky patented butyl layer is formulated with VECTOR™ chemistry for the most amazing energy conversion capabilities ever. Use it on doors, floors, roofs, hoods and trunks for a really quiet, cool and incredibly solid ride.

NOISY CARS GET QUIET!



FOR USE THROUGHOUT YOUR VEHICLE INTERIOR

ISOLATE VIBRATIONS

STOP NOISE

REDUCE HEAT



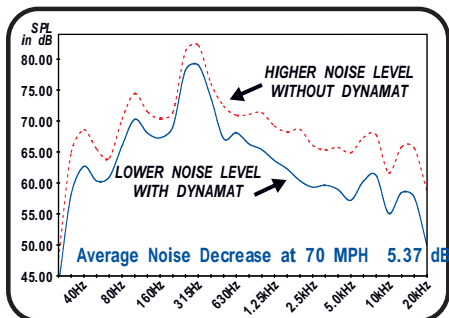
TRUNKS



DOORS



FLOORS



Noise Level Reduction Test

At Dynamic Control, we are constantly evaluating products in the lab and through "real world" road testing to insure that all of our products perform better than any other. Dynamat has proven to be the highest efficiency damping material available on the market. Dynamat gives your vehicle a quiet, luxury car feel.

BULK PAK 36 sq.ft.
1/16" thick 9 shts 18" x 32" ea. 36 sq. ft.

TRUNK KIT 20 sq.ft.
1/16" thick 5 shts 18" x 32" ea. 20 sq. ft.

DOOR KIT 12 sq.ft.
1/16" thick 4 shts 12" x 36" ea. 12 sq. ft.

WEDGE PAK 4 sq.ft.
1/16" thick 4 shts 12" x 36" ea. 12 sq. ft.

DO THIS **1st**

MAKE YOUR CAR COOL AND QUIET

APPLY DYNAMAT XTREME

to any accessible interior sheet metal or fiberglass.

IN ORDER OF IMPORTANCE



DOORS



FLOOR



TRUNK



ROOF

DO THIS **2nd**

ADD EVEN MORE COOL

APPLY DYNALINER

over the top of the Dynamat Xtreme

IN ORDER OF IMPORTANCE



DOORS



FLOOR



TRUNK



ROOF

DO THIS **3rd**

ADD EVEN MORE QUIET

HOODLINER

DYNAPAD

Apply **The Hoodliner** to the underside of your hood to absorb engine noise and control heat. If a black finish is desired, **Dynaliner** can be used. Both products are heat resistant.

Replace **Dynaliner** with **DynaPad** on floor, firewall and trunk floor when a heavy duty barrier is needed. Common applications include: high performance exhaust noise & car audio installations.

